

Monitoring Report on FMP Scheme: Project for flood protection works under three schemes along river Song and its tributaries in district Dehradun, Uttarakhand Estd. Cost. 869.6 Lakh (UK 11)

1. Introduction:

The scheme was approved by GFCC at an estimated cost of Rs 869.60 Lakh vide letter no. GFCC/MP-II/248/2011/4329-30, dated 11.08.2011 and was subsequently included under FMP in the 8th meeting of the Empowered Committee (EC) on Flood Management Programme (FMP) held on 15.12.2011 during XI Plan.

2. Salient Feature of the scheme

The scheme consists of 3 sub-schemes:

1. Project for flood protection work of village Gauri Mafi along right bank of river song (Phase II)

- Protection wall of CC block -1.850 KM

- CC block-625 nos

2. Project Estimate for flood protection works along Nagal Rao

- Protection masonry wall-1.00 KM

3. Project estimate for flood protection works along society nalah from Graphic Era institute to Cantt. Lake

- Protection masonry wall-2.050 KM

- Construction of bed-1.025 KM

3. Site Inspection

The scheme was inspected by Monitoring team headed by Shri Arun Kumar Sinha, Chairman, GFCC on 18.08.2018.

The present officers of GFCC Patna are as follows:

- i. Shri Joginder Singh, Member Planning, GFCC
- ii. Shri Ajit Kumar, Director (MP-I), GFCC
- iii. Shri Shailesh Kumar, Deputy Director, MP-II, GFCC, Patna
- iv. Shri Vardan Anand, Assistant Director, MP-II, GFCC, Patna
- v. Shri Santosh Kumar Sahoo, Junior Engineer, MP-II, GFCC, Patna

The present officers of Irrigation Department, Govt. of Uttarakhand are as follows:

- i. Shri D.K.Singh, Executive Engineer, Circle Rishikesh, Irrigation Department, Government of Uttarakhand .
- ii. Shri S.K.Mamgain, Assistant Engineer, Irrigation Division, Rishikesh, Irrigation Department, Government of Uttarakhand
- iii. Shri Kuldeep Singh, Junior Engineer, Irrigation Division, Rishikesh, Irrigation Department, Government of Uttarakhand

4. Physical and Financial Progress

As per informed by the State Government officials, NGT has certain objections on parts of this scheme and project authority have been ordered to make necessary changes in it. The first instalment of the Central share

amounting to Rs. 391.05 lakh has been released to State Government in FY:2013-14. Sub-scheme 2 & 3 are completed. The Project authority has informed that only 40 % overall work has been completed till date.

5. Sample Checking and Quality Control

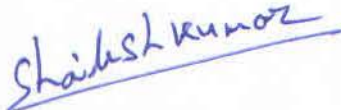
The cross section and dimensions of the sections of various structures constructed for flood protection were checked /measured at various locations and found to be in order. The quality of the executed works appeared to be satisfactory.

6. Photographs

The photographs of the sites taken during the monitoring visit are enclosed at **Annex-I**.

7. Recommendations/Observations:

- Protection works at Nagal Rao and Society nalah have been completed, however, damages have been observed at some locations, which need to be maintained.
- The project gets stalled for more than 3 year due to NGT issue at sub-scheme 1 area which lie in reserve forest.
- In sub-scheme 1, it was observed that song river eroded the right bank so much so that alignment of protection wall is engulfed.
- The morphology of river has been changed, hence protection method may get reviewed to achieve the desired result.
- The current scheme at sub scheme 1 area can not be taken up as per DPR due to such changes, hence it can't be considered in present form under FMBAP. However, there is urgent need to take up emergent work at Gauri mafi village to arrest further erosion.
- The state govt may consider a new scheme in view of changed morphology of Song river at updated price.



(Shailesh Kumar)
Dy. Director (MP-II)
GFCC, Patna



(Ajit Kumar)
Director (MP-I)
GFCC, Patna

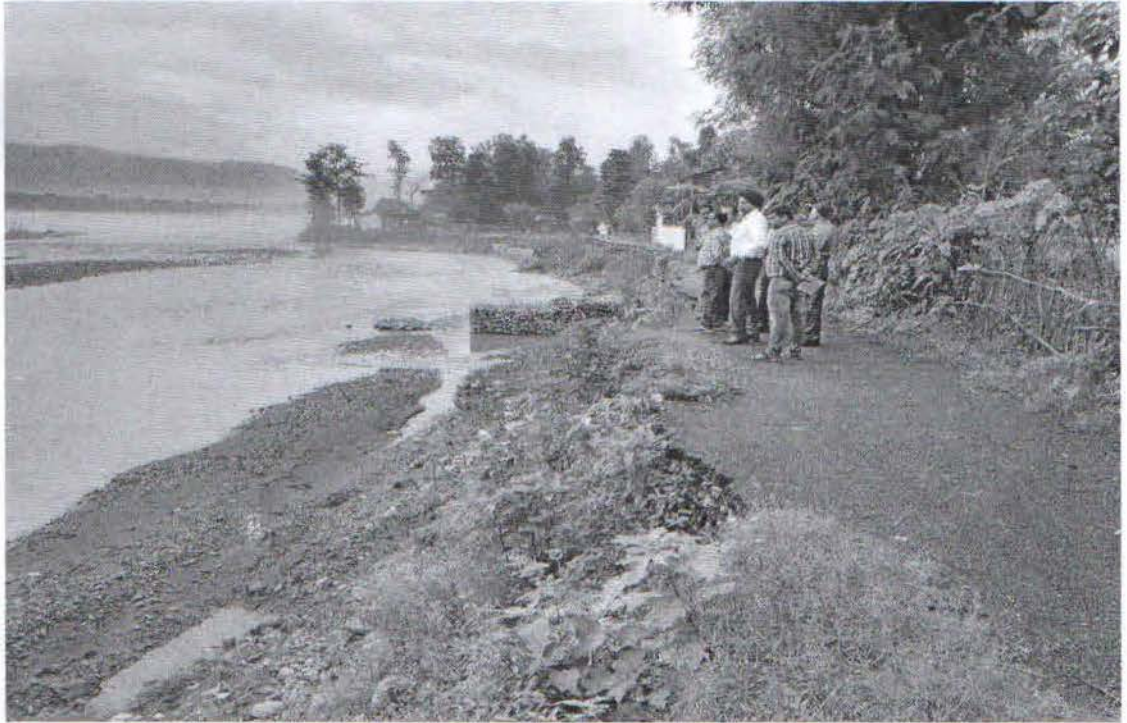


(Joginder Singh)
Member (Planning),
GFCC, Patna



(A.K. Sinha)
Chairman,
GFCC, Patna

Flood protection work of village Gauri Mafi along right bank of river Song (Phase II)



Flood protection work of village Gauri Mafi along right bank of river Song (Phase II)

